

USER MANUAL

REAR VIEW MIRROR MONITOR

WITH BUILT-IN DASH CAM & REVERSE CAMERA PACK



CAUTION

- Ensure you are using your MCPK-43DVR within your countries' road laws. Please make sure you are familiar with your local road legislation before use.
- Avoid leaving your MCPK-43DVR in direct sunlight for extended periods of time in an unventilated space.
- Please set time and date before you use this device to record.
- The reverse camera is only to be used for reference. Please drive to the actual conditions of the road.
- The system is to be used only for non-commercial use, within the limits permitted by the relevant laws.
- Avoid using the Car Dash Cam in the vicinity of any devices that emit radio interference (eg. Microwave Ovens).
- It is considered normal operation for the MCPK-43DVR Dash Cam to get warm during use.

BATTERY WARNING

- Always charge the Car Dash Cam using the provided charger. Improper charging of the MCPK-43DVR may result in failure of the internal battery.
- Never dismantle the Car Dash Cam or expose the internal battery.
- Do not dispose of the MCPK-43DVR in fire.
- Dispose of the MCPK-43DVR observing local regulations being mindful of the internal battery.
- Do not attempt to replace or expose the internal battery.

NOTES ON INSTALLATION

- It is advised that the Mirror Dash Cam is installed on the front face of your vehicle's rear view mirror, with the camera lens clearing the side of your vehicle's rear view mirror.
- Make sure that the mirror's camera lens is within the range of the windscreen wiper to ensure a clear view in wet or dusty conditions.
- Do not touch the lens with your fingers. Finger prints left on the lens will result in unclear videos or photos. If photos or videos are blurred, please clean the lens gently with a microfiber cloth.
- Only use the included charging cable to power the MCPK-43DVR.
- The Reverse camera is to be installed near your vehicle's rear number plate on the exterior of your vehicle

DISCLAIMER

Parkmate's MCPK-43DVR Mirror Dash Cam and Reverse Camera Pack is designed as a driver assistance device. Although this is a visual aid and will allow you to view what is behind the vehicle, it does not remove the responsibility of driving the vehicle from the driver. The legal responsibility and safe driving practise remains with the driver at all times. You have purchased this product with the understanding that its use is as an aid only. We highly recommend that you have this product professionally installed to ensure that it will provide the functions it is set out to perform.

1	Introduction	6
1.1	Features	6
1.2	Package Contents	6
1.3	Product Overview	6
2	Getting Started	7-12
2.1	Inserting the Memory Card	7
2.2	Installing the Clip on Mirror DVR	7
	2.2.1 Connect to Power	7
	2.2.2 Adjust the field of view	7
2.3	Connecting the Reverse Camera	8
	2.3.1 Installation Guide	8
	2.3.2 Reverse Camera Wiring Diagram	8
2.4	Powering the Mirror DVR On / Off	9
	2.4.1 Auto Power On / Off	9
	2.4.2 Manual Power On / Off and Reset	9
2.5	LED Indicator	9
2.6	Playing back Video on PC	9
2.7	Initial Settings	10
	2.7.1 Formatting Inserted Micro SD Card	10
	2.7.2 Set the Date / Time	10
2.8	Using the MCPK-43DVR	11
	2.8.1 Recording Video	11
	2.8.2 Locked Recording	11
2.9	Reverse Camera	11
2.10	Recording Screen	12
3	Video mode	13-21
3.1	Video Menu	13
	3.1.1 Park Mode	13
	3.1.2 Resolution	14
	3.1.3 Loop Recording	14
	3.1.4 MDR	14
	3.1.5 Exposure	14
	3.1.6 Motion Detection	15
	3.1.7 Microphone	15

	3.1.8 Date Stamp	15
	3.1.9 G Sensor	16
	3.2.0 Delay Power On.....	16
	3.2.1 Number Plate	16
4	Photo Mode	17
	4.1 Photo Menu.....	17
	4.1.1 Capture Mode	17
	4.1.2 Resolution	17
	4.1.3 Sequence	18
	4.1.4 Quality	18
	4.1.5 Sharpness	18
	4.1.6 White Balance	19
	4.1.7 Colour	19
	4.1.8 ISO	19
	4.1.9 Exposure	20
	4.2.0 Anti Shaking	20
	4.2.1 Quick Review.....	20
	4.2.2 Date Stamp	21
5	Setting Menu	21-25
	5.1 Setting Date / Time.....	21
	5.2 Key Beeps.....	22
	5.3 Language	22
	5.4 TV Mode.....	23
	5.5 Screen Saver	23
	5.6 Frequency	24
	5.7 Format.....	24
	5.8 Default Settings	25
6	Menu Tables	25-26
	6.1 Deleting Photos & Videos	25
	6.2 Locking and Unlocking Photos and Videos.....	26
7	Menu Tables	27-29
	Warranty.....	31

1. INTRODUCTION

Thank you for purchasing a Parkmate Mirror DVR with Integrated 1080P Dash Cam DVR & Reverse Camera. We are certain that our product will give you trouble free operation while providing you with a safety feature that enhances your driving experience. Our products, like most after-market safety enhanced devices, are designed to assist and aid the driver, not to replace the manual function of the person operating the vehicle. Please read through these instructions before attempting to install this product. For the latest manual updates, please see www.parkmate.com.au or www.parkmatehd.co.nz.

1.1 FEATURES

- Recording full high definition 1080p footage at 30 frames per second.
- 4.3" colour screen
- 120° wide angle lens
- Emergency recording saves your footage when an impact is detected
- Supports Micro SD cards, class 6 and above up to 32GB (Micro SD Card not included)
- Reverse Camera with Grid Lines

1.2 PACKAGE CONTENTS

Mirror DVR



12v Adapter



Rubber Fasteners



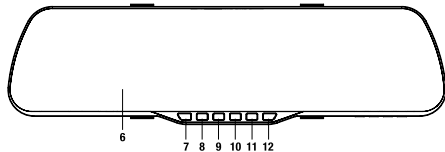
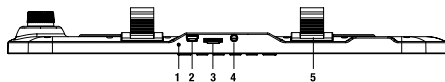
Reverse Camera



6M Reverse Camera Cable

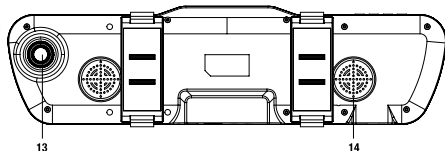


Mini USB Cable



1.3 PRODUCT OVERVIEW

- | | | |
|------------------------|-----------------|-------------------|
| 1. Reset Button | 6. 4.3" display | 11. Rec/OK Button |
| 2. Mini USB Power Port | 7. Power Button | 12. Down Button |
| 3. Micro SD Card Slot | 8. Menu Button | 13. Camera Lens |
| 4. AV In | 9. Mode Button | 14. Speaker |
| 5. Fastening clips | 10. Up Button | |



2. GETTING STARTED

2.1 INSERTING/REMOVING A MICRO SD CARD

With the Mirror DVR turned off and the screen facing towards you insert the memory card with the text on the Micro SD card facing away from you. Push the memory card in until a click is heard.

To remove the memory card, ensure that the Mirror DVR is powered off, then push the memory card until a click is heard and then release the card to eject.

- Note:**
1. Do not remove or insert the memory card while the Mirror DVR is turned on as this may damage the memory card or corrupt the memory cards stored data.
 2. Please use a Class 6 or higher rated micro SD card with a maximum capacity of 32GB.
 3. Please format the Micro SD card before the initial use.
 4. When removing the memory card, be careful as the card may eject quickly.
 5. Micro SD Card is not included

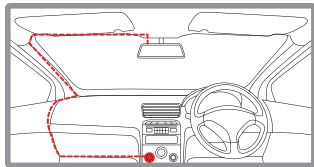
2.2 INSTALLING THE MCPK-43DVR

1. Loop the rubber fasteners over the top fastener clips.
2. Put the Mirror DVR in position on the front face of your existing rear view mirror ensuring that the camera lens clears the edge of your rear view mirror.
3. Loop the bottom rubber fasteners over the bottom fastener clips.

2.2.1 CONNECTING TO POWER

Only use the included charger to power and charge the Mirror DVR.

1. Once the Mirror DVR is securely installed onto your vehicles rear view mirror, plug the 12V DC charger into your vehicles cigarette lighter adapter or power source.
2. Run the cable along your vehicles console and windscreen and plug it into the Mirror DVR port marked with the USB icon.



2.2.2 ADJUST THE FIELD OF VIEW

1. Use the camera lens on the rear of the Mirror DVR to move the camera field of view to the desired position.

- Note:**
1. Make sure that the cameras view is not obstructed by any window tint or any other objects.
 2. If your vehicle has side curtain airbags please be very careful when running any cables along your vehicles windows. Ensure you are not running cables past any of the airbags as this can prevent the airbags from deploying.

2.3 CONNECTING THE REVERSE CAMERA

2.3.1 INSTALLATION GUIDE

1. Select a flat and centred location near the number plate lamp at the rear of the vehicle to mount camera.
2. Attach tape to the bracket of the camera to hold the camera in position while installing, and drill two small holes, one for the first screw, the second to run the reverse camera cable through. (Refer to fig 2.3.1)
3. Use a screw driver to fix the first screw, leaving the screw loose enough to adjust the camera. (Refer to fig 2.3.2)
4. Insert the camera wire through the intended drilled hole checking the installation position. (Refer to fig 2.3.3)
5. Mark the position suitable for the second screw and drill a small hole for it. (Refer to fig 2.3.4)
6. Fix the second screw and securely tighten both screws. (Refer to fig 2.3.5)

2.3.2 REVERSE CAMERA WIRING DIAGRAM

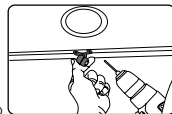
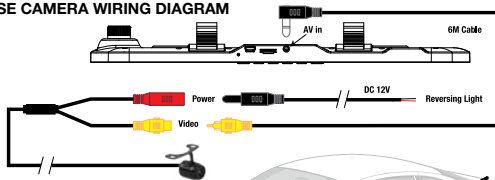


Fig 2.3.1

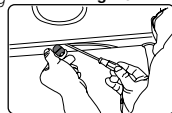


Fig 2.3.2

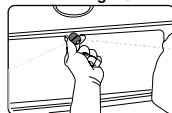


Fig 2.3.3

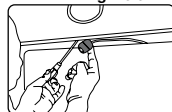


Fig 2.3.4



Fig 2.3.5

2.4 POWERING THE MIRROR DVR ON/OFF

2.4.1 AUTO POWER ON/OFF

When the MCPK-43DVR is correctly installed and connected to your vehicles' 12V DC power supply, the Mirror DVR will automatically power on and start recording when the car's accessories are activated. The Mirror DVR will automatically stop recording and shutdown when your vehicle is powered off.

2.4.2 MANUAL POWER ON/OFF

MANUAL POWER ON

Press and hold the Power button on the front of the Mirror DVR until the Parkmate start up screen appears.

MANUALLY POWER OFF

If the Mirror DVR is currently recording, please manually stop the recording by pressing the Rec/OK button. Press and hold the Power button on the front of the MCPK-43DVR. After powering off the device please wait for 10 seconds before powering the Mirror DVR on again.

RESETTING THE DEVICE

If the Mirror DVR does not function normally, try restarting the Mirror DVR. To restart the Mirror DVR with a flattened paper clip, press the small button on the top of the Mirror DVR next to the Mini USB port.

2.5 LED INDICATOR

STATUS EXPLANATION	LED INDICATOR COLOUR
Battery Charging	Solid RED Light
Power on, Battery Fully Charged	Solid BLUE Light
Power on, Recording	Flashing BLUE light

2.6 PLAYING BACK RECORDED VIDEO ON A PC

To playback video files on your PC it is recommended to connect the Micro SD card (not included) directly to your PC using either a USB Micro SD card reader (not included) or if your PC has a SD card slot, a Micro SD/SD Card converter (not included). Once the Micro SD card is connected it should appear as a removable storage device. It is recommended that you transfer video files that you want to playback to a folder on your computer before attempting to playback. This will reduce any delay in playback.

2.7 INITIAL SETTINGS

Before using the MCPK-43DVR we recommend **Formatting the Inserted Micro SD Card** and **Setting the Time and Date**.

2.7.1 FORMATTING THE INSERTED MICRO SD CARD

Formatting the Micro SD card will delete all information on the inserted Micro SD Card and prepare the card for use with the Mirror DVR.

1. Press the **REC** Button to stop the Mirror DVR from recording.
2. Press the **MENU** Button to enter the **Video Menu**.
3. Press the **MENU** Button again to enter the **Settings Menu**.
4. Use the **▲** and **▼** Buttons to navigate the **Settings Menu** and highlight the **Format** setting and press **REC** to select.
5. Select OK to confirm and press the **REC** Button.

Note: 1. Menu cannot be accessed while the camera is recording. Please stop the recording before attempting to access the menu.
2. **Formatting your Micro SD Card** will delete all file from the card. Once these files have been deleted you will not be able to recover them.

2.7.2 SET DATE / TIME

Setting the Time and Date allows you to stamp your footage with the time as a reference.

1. Press the **REC** Button to stop the Mirror DVR from recording.
2. Press the **MENU** Button to enter the **Video Menu**.
3. Press the **MENU** Button again to enter the **Settings Menu**.
4. Use the **▲** and **▼** Buttons to navigate the **Settings Menu** and highlight the **Date/Time** setting and press **REC** to select.
5. Use the **▲** and **▼** buttons to edit the selected digit and the **REC** button to confirm and progress to the next digit. The final field sets the format that the date will be presented in.
6. To save the date and time, press the **MENU** Button.

Note: 1. Menu cannot be accessed while the camera is recording. Please stop the recording before attempting to access the menu.
2. Once the time and date is set it can be stamped onto your footage using the Date Stamp setting. Please see section **Date Stamp** for more details.

2.8 USING THE MCPK-43DVR

2.8.1 RECORDING VIDEO

When the Mirror DVR is connected to your vehicles 12v power supply, the Mirror DVR will automatically power up and begin recording when you start your vehicle. During the start up the buttons will be unresponsive and the camera will take a moment to begin recording. The Mirror DVR will automatically stop recording and shutdown when your vehicle is powered off.

- Note:**
1. Because of how some vehicles are wired, the recording may continue when the engine is switched off. If this happens, please manually turn off the Mirror DVR or remove the car adapter from the cigarette lighter when not in use.
 2. The **recording loop length** can be configured to save a video file for every 2,3,5 or 10 minutes of recording. For information on how to adjust this setting please refer to the **Loop Recording** section of this manual.
 3. The device saves the recorded footage and Photos on to the inserted Micro SD Card. If the memory card capacity is full, the oldest file in the memory card will be overwritten.
 4. The reverse camera is designed to assist with reversing and is not designed to record. Recording will only be captured using the front facing camera.

2.8.2 LOCKED RECORDING

Locked Recording saves the current video file and protects it from being overwritten. To manually start a **Locked Recording** follow the instructions below.

1. During recording push the **MODE** button.
2. To stop recording press the **REC** button again.

- Note:**
1. If the **G Sensor** function is enabled and a collision is detected, the device will automatically trigger the **Locked Recording** and protect the current video file. Please refer to the section titled **G Sensor** for information on adjusting this setting.
 2. The emergency recording file is created as a new file, which will be protected to avoid being overwritten by normal loop recording. If the inserted Micro SD Card fills up with **Locked Recording** files the message "SD Card Full" will appear on the screen, and the oldest **Locked Recording** file will be automatically deleted when a new **Locked Recording** file is created.

2.9 REVERSE CAMERA

The Reverse Camera is designed to assist with reversing by showing your rear view from your bumper reducing blind spots. When installed correctly, the Reverse camera will activate when your vehicles reverse gear is selected, and the reverse cameras feed will be displayed on screen. When your vehicles reverse gear is disengaged the Reverse Camera will power down and the MCPK-43DVRs screen will revert back to displaying the front facing camera feed.

- Note:**
1. The Reverse Camera is designed to assist with reversing your vehicle, and will not record.
 2. The Reverse Camera this is a visual aid and will allow you to view what is behind the vehicle, it does not remove the responsibility of driving the vehicle from the driver.
 3. To ensure correct operation, it is highly recommended that the Reverse Camera is professionally installed.

2.10 RECORDING SCREEN



Number	Icon	Item	Description
1		Video Mode	Icon represents the currently selected mode
2		Loop Recording	Shows the duration of the loop clips
3		Motion Detection	The Motion Detection Icon will appear when Motion detection is activated
4		Recording Indicator	The Record Indicator will flash when the Mirror DVR is Recording
5		Wide Dynamic Range	The WDR icon will appear when the Wide Dynamic Range setting is active
6		Locked Recording	Shows when the current recording has been lock either by a G Sensor trigger, or Manually.
7		Recording Duration	Shows the current recording duration
8		Resolution	Shows the current set resolution
9		Memory card	The Memory Card icon shows when a Micro SD Card is installed
10		Current Date	Shows the current date
11		Current Time	Shows the current time
12		Power	Shows the power connection

3. VIDEO MODE

When the Mirror DVR is powered up the video screen will start by default. In this screen recording will automatically start and can be stopped by pressing the **REC** Button. To access the Video Menu, ensure that the Mirror DVR is not recording then press the **MENU** button.

To manually trigger a Locked Recording, while recording press the **MODE** Button. The Locked Recording icon will appear at the top of the screen indicating that the current recording has been Locked from being recorded over by the regular Loop Recording.

To easily capture a snapshot while you are recording, press the **MENU** Button while recording is in progress.

3.1 VIDEO MENU

3.1.1 PARK MODE

Park Mode detects any activity from the built in **G Sensor** once you have parked your vehicle. If an impact is detected, the Mirror DVR will power up and record a clip. To activate **Park Mode** please follow the instructions below.

1. Press the **REC** Button to stop the Mirror DVR from recording.
2. With the Mirror DVR in video screen, hold the **MENU** Button for 2 seconds.
3. Park Mode will activate and a 'P' icon will be displayed onscreen.

Note: 1. Park Mode operates off of the internal battery, this will allow for 2-3 clips to be saved before the battery will deplete depending on if the battery is fully charged.

3.1.2 RESOLUTION

Resolution sets the video quality. Higher resolution video will capture more detail and will also produce larger files. To change the recording resolution, please follow the instructions below.

1. Press the **REC** Button to stop the Mirror DVR from recording.
2. Press the **MENU** Button to enter the **Video Menu**.
3. Use the **▲** and **▼** Buttons to navigate the **Video Menu** and highlight the **Resolution** setting and press **REC** to select.
4. Use the **▲** and **▼** Buttons to highlight your required resolution, then press the **REC** button to confirm your selection.

Note: 1. Menus cannot be accessed while the camera is recording. Please stop the recording before attempting to access the menu.
2. Higher resolution clips will create larger files which will fill the Micro SD Card faster.

3.1.3 LOOP RECORDING

Loop recording allows you to set the duration that the camera will record before creating a new clip. To set the clip length please follow the instructions below.

1. Press the **REC** Button to stop the Mirror DVR from recording.
2. Press the **MENU** Button to enter the **Video Menu**.
3. Use the **▲** and **▼** Buttons and highlight the **Loop Recording** setting and press **REC** to select.
4. Use the **▲** and **▼** Buttons to highlight your required clip length, then press the **REC** button to confirm your selection.

Note: 1. Menu cannot be accessed while the camera is recording. Please stop the recording before attempting to access the menu.
2. Selecting the OFF option will create the longest possible clip, in most cases depending on the set resolution and other factors this will be limited to 10MB.
3. To avoid filling the card quickly it is advised to use the 2 or 3 minute options.

3.1.4 WDR

Wide Dynamic Range (**WDR**) controls the image lighting and balancing on your recorded footage, capturing detail in situations with unbalanced lighting. To activate **WDR** please follow the steps below.

1. Press the **REC** Button to stop the Mirror DVR from recording.
2. Press the **MENU** Button to enter the **Video Menu**.
3. Use the **▲** and **▼** Buttons and highlight the **WDR** setting and press **REC** to select.
4. Use the **▲** and **▼** Buttons to highlight either OFF or ON, then press the **REC** button to confirm your selection.

Note: 1. Menu cannot be accessed while the camera is recording. Please stop the recording before attempting to access the menu.

3.1.5 EXPOSURE

Exposure is used to manually control the light sensitivity settings. To change the Exposure setting follow the instructions below.

1. Press the **REC** Button to stop the Mirror DVR from recording.
2. Press the **MENU** Button to enter the **Video Menu**.
3. Use the **▲** and **▼** Buttons and highlight the **Exposure** setting and press **REC** to select.
4. Use the **▲** and **▼** Buttons to highlight your required **Exposure** setting, then press the **REC** button to confirm your selection.

Note: 1. Menu cannot be accessed while the camera is recording. Please stop the recording before attempting to access the menu.

3.1.6 MOTION DETECTION

Motion Detection is used to pause recording when no motion is detected in front of the camera, and to start recording when motion is detected again. To activate the Motion Detection setting follow the instructions below.

1. Press the **REC** Button to stop the Mirror DVR from recording.
2. Press the **MENU** Button to enter the **Video Menu**.
3. Use the **▲** and **▼** Buttons to navigate the **Video Menu** and highlight the **Motion Detection** setting and press **REC** to select.
4. Use the **▲** and **▼** Buttons to highlight either OFF or ON, then press the **REC** button to confirm your selection.

Note: 1. Menus cannot be accessed while the camera is recording. Please stop the recording before attempting to access the menu.
2. Motion detection does not work when your vehicle is powered off.

3.1.7 MICROPHONE

The Microphone setting allows you to mute the microphone during recording. To set your recording preferences, please follow the instructions below.

1. Press the **REC** Button to stop the Mirror DVR from recording.
2. Press the **MENU** Button to enter the **Video Menu**.
3. Use the **▲** and **▼** Buttons to navigate the **Video Menu** and highlight the **Microphone** setting and press **REC** to select.
4. Use the **▲** and **▼** Buttons to highlight either OFF or ON, then press the **REC** button to confirm your selection.

Note: 1. Menus cannot be accessed while the camera is recording. Please stop the recording before attempting to access the menu.

3.1.8 DATE STAMP

Date stamp will stamp the current date onto the footage for future reference. To set the date stamp please follow the instructions below.

1. Press the **REC** Button to stop the Mirror DVR from recording.
2. Press the **MENU** Button to enter the **Video Menu**.
3. Use the **▲** and **▼** Buttons to navigate the **Video Menu** and highlight the **Date Stamp** setting and press **REC** to select.
4. Use the **▲** and **▼** Buttons to highlight either OFF or ON, then press the **REC** button to confirm your selection.

Note: 1. Menus cannot be accessed while the camera is recording. Please stop the recording before attempting to access the menu.
2. For **date stamp** to be correct the time and date must be set first. To set the time and date please see section **Date/Time**.

3.1.9 G SENSOR

The **G Sensor** defines the required force needed to trigger a Locked Recording. Once a Locked Recording is triggered in the case of an incident or impact the current recording will be automatically protected from being saved over by the normal loop recording. To set the required sensitivity please follow the instructions below.

1. Press the **REC** Button to stop the Mirror DVR from recording.
2. Press the **MENU** Button to enter the **Video Menu**.
3. Use the **▲** and **▼** Buttons to navigate the **Video Menu** and highlight the **G Sensor** setting and press **REC** to select.
4. Use the **▲** and **▼** Buttons to highlight your required sensitivity, then press the **REC** button to confirm your selection.

Note: 1. Menu cannot be accessed while the camera is recording. Please stop the recording before attempting to access the menu.
2. If your memory card is filling up quickly you may need to lower the sensitivity of the **G Sensor (Gravity Sensor)** to decrease the number of triggers caused by normal driving.

3.2.0 DELAY POWER ON

Delay Power On sets a delay on recording after the Car DVR receives power and when the front facing camera starts recording. To set a delay, please follow the steps below.

1. Press the **REC** Button to stop the Mirror DVR from recording.
2. Press the **MENU** Button to enter the **Video Menu**.
3. Use the **▲** and **▼** Buttons to navigate the **Video Menu** and highlight the **Delay Power** setting and press **REC** to select.
4. Use the **▲** and **▼** Buttons to highlight your required delay, then press the **REC** button to confirm your selection.

Note: 1. Menu cannot be accessed while the camera is recording. Please stop the recording before attempting to access the menu.

3.2.1 NUMBER PLATE

Number Plate will stamp your vehicles number plate onto the footage for reference. To set the Number Plate setting please follow the instructions below.

1. Press the **REC** Button to stop the Mirror DVR from recording.
2. Press the **MENU** Button to enter the **Video Menu**.
3. Use the **▲** and **▼** Buttons to navigate the **Video Menu** and highlight the **Number Plate** setting and press **REC** to select.
4. Use the **MODE** button to switch between letters and numbers and the **▲** and **▼** Buttons to select cycle through the selected output. The **REC** button is used to select the required character.
5. When you have finished inputting your vehicles number plate, use the **MODE** button to select "OK" and press the **REC** button.

Note: 1. Menu cannot be accessed while the camera is recording. Please stop the recording before attempting to access the menu.

4. PHOTO MODE

This screen is used to capture still images using your Clip on Mirror DVR. To access the Photo screen ensure that the camera is not recording and press the **MODE** button. Photo mode also has a menu which is used to edit the photo settings. This menu can be accessed by pressing the **MENU** in the Photo Screen.

4.1 PHOTO MENU

4.1.1 CAPTURE MODE

The Capture mode setting is used to set a delayed timer. To set a timer delay follow the instructions below.

1. Enter the Photo screen.
2. Press the **MENU** Button to enter the **Photo Menu**.
3. Use the **▲** and **▼** Buttons to navigate the **Photo Menu** and highlight the **Capture Mode** setting and press **REC** to select.
4. Use the **▲** and **▼** Buttons to highlight your required timer delay, then press the **REC** button to confirm your selection.

Note: 1. Menu cannot be accessed while the camera is recording. Please stop the recording before attempting to access the menu.
2. This setting can only be accessed through the **Photo Menu**, please make sure that you are in the **Photo screen** when you access the menu.

4.1.2 RESOLUTION

Resolution sets the still image quality. Higher resolution image will capture more detail and will also produce larger files. To change the photo resolution, please follow the instructions below.

1. Enter the Photo screen.
2. Press the **MENU** Button to enter the **Photo Menu**.
3. Use the **▲** and **▼** Buttons to navigate the **Photo Menu** and highlight the **Resolution** setting and press **REC** to select.
4. Use the **▲** and **▼** Buttons to highlight your required resolution, then press the **REC** button to confirm your selection.

Note: 1. Menu cannot be accessed while the camera is recording. Please stop the recording before attempting to access the menu.
2. This setting can only be accessed through the **Photo Menu**, please make sure that you are in the **Photo screen** when you access the menu.

4.1.3 SEQUENCE

When **Sequence** is activated, a sequence of 3 photos is taken when a photo is triggered. To activate or deactivate Sequence mode, follow the instructions below.

1. Enter the Photo screen.
2. Press the **MENU** Button to enter the **Photo Menu**.
3. Use the **▲** and **▼** Buttons to navigate the **Photo Menu** and highlight the **Sequence** setting and press **REC** to select.
4. Use the **▲** and **▼** Buttons to highlight either OFF or ON, then press the **REC** button to confirm your selection.

Note: 1. Menu cannot be accessed while the camera is recording. Please stop the recording before attempting to access the menu.
2. This setting can only be accessed through the **Photo Menu**, please make sure that you are in the **Photo screen** when you access the menu.

4.1.4 QUALITY

Quality sets the still image detail. Higher quality images will capture more detail and will also produce larger files. To change the recording resolution, please follow the instructions below.

1. Enter the Photo screen.
2. Press the **MENU** Button to enter the **Photo Menu**.
3. Use the **▲** and **▼** Buttons to navigate the **Photo Menu** and highlight the **Quality** setting and press **REC** to select.
4. Use the **▲** and **▼** Buttons to highlight your required quality, then press the **REC** button to confirm your selection.

Note: 1. Menu cannot be accessed while the camera is recording. Please stop the recording before attempting to access the menu.
2. This setting can only be accessed through the **Photo Menu**, please make sure that you are in the **Photo screen** when you access the menu.

4.1.5 SHARPNESS

Sharpness sets the boldness of the still image. Images with a stronger sharpness will create bolder images with stronger outlines. To change the photo Sharpness, please follow the instructions below.

1. Enter the Photo screen.
2. Press the **MENU** Button to enter the **Photo Menu**.
3. Use the **▲** and **▼** Buttons to navigate the **Photo Menu** and highlight the **Sharpness** setting and press **REC** to select.
4. Use the **▲** and **▼** Buttons to highlight your required sharpness, then press the **REC** button to confirm your selection.

Note: 1. Menu cannot be accessed while the camera is recording. Please stop the recording before attempting to access the menu.
2. This setting can only be accessed through the **Photo Menu**, please make sure that you are in the **Photo screen** when you access the menu.

4.1.6 WHITE BALANCE

The White Balance setting is used to manually adjust the settings used to counteract different light conditions. This setting is set to Auto by default. To change the White Balance setting follow the instructions below.

1. Enter the Photo screen.
2. Press the **MENU** Button to enter the **Photo Menu**.
3. Use the **▲** and **▼** Buttons to navigate the **Photo Menu** and highlight the **White Balance** setting and press **REC** to select.
4. Use the **▲** and **▼** Buttons to highlight your required setting, then press the **REC** button to confirm your selection.

Note: 1. Menu cannot be accessed while the camera is recording. Please stop the recording before attempting to access the menu.
2. This setting can only be accessed through the **Photo Menu**, please make sure that you are in the **Photo screen** when you access the menu.

4.1.7 COLOUR

The Colour setting is used to set the colour palette. To change the Colour setting follow the instructions below.

1. Enter the Photo screen.
2. Press the **MENU** Button to enter the **Photo Menu**.
3. Use the **▲** and **▼** Buttons to navigate the **Photo Menu** and highlight the **Colour** setting and press **REC** to select.
4. Use the **▲** and **▼** Buttons to highlight your required Colour setting, then press the **REC** button to confirm your selection

Note: 1. Menu cannot be accessed while the camera is recording. Please stop the recording before attempting to access the menu.
2. This setting can only be accessed through the **Photo Menu**, please make sure that you are in the **Photo screen** when you access the menu.

4.1.8 ISO

ISO is used to manage how much light is let into the image sensor. Setting a higher **ISO** will let in more light and blurred movement and lower **ISO** will capture less movement and less light. To change the **ISO** setting follow the instructions below.

1. Enter the Photo screen.
2. Press the **MENU** Button to enter the **Photo Menu**.
3. Use the **▲** and **▼** Buttons to navigate the **Photo Menu** and highlight the **ISO** setting and press **REC** to select.
4. Use the **▲** and **▼** Buttons to highlight your required ISO setting, then press the **REC** button to confirm your selection.

Note: 1. Menu cannot be accessed while the camera is recording. Please stop the recording before attempting to access the menu.
2. This setting can only be accessed through the **Photo Menu**, please make sure that you are in the **Photo screen** when you access the menu.

4.1.9 EXPOSURE

Exposure is used to manually control the light settings. To change the Exposure setting follow the instructions below.

1. Enter the Photo screen.
2. Press the **MENU** Button to enter the **Photo Menu**.
3. Use the **▲** and **▼** Buttons to navigate the **Photo Menu** and highlight the **Exposure** setting and press **REC** to select.
4. Use the **▲** and **▼** Buttons to highlight your required Exposure setting, then press the **REC** button to confirm your selection.

Note: 1. Menu cannot be accessed while the camera is recording. Please stop the recording before attempting to access the menu.
2. This setting can only be accessed through the **Photo Menu**, please make sure that you are in the **Photo screen** when you access the menu.

4.2.0 ANTI SHAKING

The **Anti Shaking** setting uses the on board chipset to correct some of the blur caused by handheld photography. To enable **Anti Shaking** follow the instructions below.

1. Enter the Photo screen.
2. Press the **MENU** Button to enter the **Photo Menu**.
3. Use the **▲** and **▼** Buttons to navigate the **Photo Menu** and highlight the **Anti Shaking** setting and press **REC** to select.
4. Use the **▲** and **▼** Buttons to highlight either OFF or ON, then press the **REC** button to confirm your selection.

Note: 1. Menu cannot be accessed while the camera is recording. Please stop the recording before attempting to access the menu.
2. This setting can only be accessed through the **Photo Menu**, please make sure that you are in the **Photo screen** when you access the menu.

4.2.1 QUICK REVIEW

Quick review displays the photo on screen for the set amount of time after the photo has been taken. To change the **Quick Review** setting follow the instructions below.

1. Enter the Photo screen.
2. Press the **MENU** Button to enter the **Photo Menu**.
3. Use the **▲** and **▼** Buttons to navigate the **Photo Menu** and highlight the **Quick Review** setting and press **REC** to select.
4. Use the **▲** and **▼** Buttons to highlight your required image display time setting, then press the **REC** button to confirm your selection.

Note: 1. Menu cannot be accessed while the camera is recording. Please stop the recording before attempting to access the menu.
2. This setting can only be accessed through the **Photo Menu**, please make sure that you are in the **Photo screen** when you access the menu.

4.2.2 DATE STAMP

Date stamp is used to stamp your photos with the time and date that they are taken. To select your preferred time and date format follow the instructions below.

1. Enter the Photo screen.
2. Press the **MENU** Button to enter the **Photo Menu**.
3. Use the **▲** and **▼** Buttons to navigate the **Photo Menu** and highlight the **Date Stamp** setting and press **REC** to select.
4. Use the **▲** and **▼** Buttons to highlight either Date, Date/Time or On, then press the **REC** button to confirm your selection.

Note: 1. Menus cannot be accessed while the camera is recording. Please stop the recording before attempting to access the menu.
2. This setting can only be accessed through the Photo Menu, please make sure that you are in the Photo screen when you access the menu.
3. The **Date Stamp** setting is not used to set the cameras internal clock. To set the time follow the instructions **Date/Time** in the settings section.

5. SETTING MENU

This menu is used to edit the cameras operational settings. This menu can be accessed through either the **Video** or **Photo** menu by pressing the **MENU** whilst in either of these menus. While in this menu the **▲** and **▼** buttons are used to navigate and the **REC** button to select the highlighted setting.

5.1 SETTING THE DATE/TIME

Setting the Time and Date allows you to stamp your footage with the time as a reference.

1. Press the **REC** Button to stop the Mirror DVR from recording.
2. Press the **MENU** Button to enter the **Video Menu**.
3. Press the **MENU** Button again to enter the **Settings Menu**.
4. Use the **▲** and **▼** Buttons to navigate the **Settings Menu** and highlight the **Set Date/Time** setting and press **REC** to select.
5. Use the **▲** and **▼** buttons to edit the selected digit and the **REC** button to confirm and progress to the next digit. The final field sets the format that the date will be presented in.
6. To save and exit the time and date, press the **MENU** button.

Note: 1. Menus cannot be accessed while the camera is recording. Please stop the recording before attempting to access the menu.
2. Once the time and date is set it can be stamped onto your footage using the **Date Stamp** setting. Please see section **Date Stamp (3.1.8)** for more details.

5.2 KEY BEEPS

The **Key Beeps** setting is used to mute the beep notification when a button is pressed. To change the **Key Beep** setting please follow the instructions below.

1. Press the **REC** Button to stop the Mirror DVR from recording.
2. Press the **MENU** Button to enter the **Video Menu**.
3. Use the **▲** and **▼** Buttons to navigate the **Video Menu** and highlight the **Key Beeps** setting and press **REC** to select.
4. Use the **▲** and **▼** Buttons to highlight either OFF or ON, then press the **REC** button to confirm your selection.

Note: 1. Menu cannot be accessed while the camera is recording. Please stop the recording before attempting to access the menu.
2. This setting can only be accessed through the **Settings Menu** which can be accessed via the **Video & Photo Menus**.

5.3 LANGUAGE

The **Language** setting is used to select your preferred **Language** in the menus. To set the systems **Language** follow the instructions below.

1. Press the **REC** Button to stop the Mirror DVR from recording.
2. Press the **MENU** Button to enter the **Video** or **Menu**.
3. Press the **MENU** Button again to enter the **Settings Menu**.
4. Use the **▲** and **▼** Buttons to navigate the **Settings Menu** and highlight the **Language** setting and press **REC** to select.
5. Use the **▲** and **▼** Buttons to highlight your preferred language, then press the **REC** button to confirm your selection.

Note: 1. Menu cannot be accessed while the camera is recording. Please stop the recording before attempting to access the menu.
2. This setting can only be accessed through the **Settings Menu** which can be accessed via the **Video & Photo Menus**.

5.4 TV MODE

The **TV Mode** setting is used to change the video output between NTSC and PAL. To change the **TV Mode** setting please follow the instructions below.

1. Press the **REC** Button to stop the Mirror DVR from recording.
2. Press the **MENU** Button to enter the **Video** or **Menu**.
3. Press the **MENU** Button again to enter the **Settings Menu**.
4. Use the **▲** and **▼** Buttons to navigate the **Settings Menu** and highlight the **TV Mode** setting and press **REC** to select.
5. Use the **▲** and **▼** Buttons to highlight either OFF or ON, then press the **REC** button to confirm your selection.

Note: 1. Menus cannot be accessed while the camera is recording. Please stop the recording before attempting to access the menu.
2. This setting can only be accessed through the **Settings Menu** which can be accessed via the **Video & Photo Menus**.

5.5 SCREEN SAVER

The **Screen Saver** setting is used to set the duration of inactivity of the camera before the screen goes into sleep mode. To set the **Screen Saver** follow the instructions below.

1. Press the **REC** Button to stop the Mirror DVR from recording.
2. Press the **MENU** Button to enter the **Video** or **Menu**.
3. Press the **MENU** Button again to enter the **Settings Menu**.
4. Use the **▲** and **▼** Buttons to navigate the **Settings Menu** and highlight the **Screen Saver** setting and press **REC** to select.
5. Use the **▲** and **▼** Buttons to highlight your preferred duration of activity, then press the **REC** button to confirm your selection.

Note: 1. Menus cannot be accessed while the camera is recording. Please stop the recording before attempting to access the menu.
2. This setting can only be accessed through the **Settings Menu** which can be accessed via the **Video & Photo Menus**.
3. Even when the screensaver is activated and the screen goes into sleep mode, the camera will continue recording.

5.6 FREQUENCY

The Frequency setting is used to set the cameras frequency. To adjust the frequency, follow the instructions below.

1. Press the **REC** Button to stop the Mirror DVR from recording.
2. Press the **MENU** Button to enter the **Video** or **Menu**.
3. Press the **MENU** Button again to enter the **Settings Menu**.
4. Use the **▲** and **▼** Buttons to navigate the **Settings Menu** and highlight the **Frequency** setting and press **REC** to select.
5. Use the **▲** and **▼** Buttons to highlight your preferred Frequency, then press the **REC** button to confirm your selection.

Note: 1. Menu cannot be accessed while the camera is recording. Please stop the recording before attempting to access the menu.
2. This setting can only be accessed through the **Settings Menu** which can be accessed via the **Video & Photo Menus**.

5.7 FORMAT

Formatting the Micro SD card will delete all information on the inserted Micro SD Card and prepare the card for use with the Mirror DVR.

1. Ensure the Mirror DVR is not recording.
2. Press the **MENU** Button to enter the **Video** or **Menu**.
3. Press the **MENU** Button again to enter the **Settings Menu**.
4. Use the **▲** and **▼** Buttons to navigate the **Settings Menu** and highlight the **Format** setting and press **REC** to select.
5. Press the **REC** button.
6. Use the **▲** and **▼** Buttons to highlight your preferred image rotation, then press the **REC** button to confirm your selection.

Note:

1. Menu cannot be accessed while the camera is recording. Please stop the recording before attempting to access the menu.
2. **Formatting your Micro SD Card** will delete all files from the card. Once these files have been deleted you will not be able to recover them.

5.8 DEFAULT SETTINGS

Default Settings is used to revert the Mirror DVRs settings to their default settings. To reset the camera to restore the default settings, please follow the instructions below.

1. Ensure the Mirror DVR is not recording.
2. Press the **MENU** Button to enter the **Video** or **Menu**.
3. Press the **MENU** Button again to enter the **Settings Menu**.
4. Use the **▲** and **▼** Buttons to navigate the **Settings Menu** and highlight the **Default Settings** setting and press **REC** to select.
5. Use the **▲** and **▼** Buttons to highlight your preferred image rotation, then press the **REC** button to confirm your selection.

Note: 1. Menu cannot be accessed while the camera is recording. Please stop the recording before attempting to access the menu.
2. This setting can only be accessed through the **Settings Menu** which can be accessed via the **Video & Photo Menus**.

6. PLAYBACK SCREEN

This screen is used to playback photos and videos. To access the Playback screen ensure that the camera is not recording and press the **MODE** button. This will send the camera to the photo screen. While in the Photo and press the **MODE** button again which will bring you to the Playback Screen. In this screen the **▲** and **▼** buttons are used to cycle through the recorded videos and photos and the **REC** button is used to play and pause videos. In the **Playback Screen** photos and videos can also be locked and deleted via the Playback Menu. This menu can be accessed by pressing the **MENU** button in the Photo Screen.

6.1 DELETING PHOTOS AND VIDEOS

To delete an unlocked photo or video follow the instructions below.

1. Navigate to the playback screen using the instructions in the section labelled **Playback Screen**.
2. In the **Playback Screen** use the **▲** and **▼** buttons to select the photo or video that you want to delete (if you want to delete all unlocked photos and videos select any unlocked Photo or Video).
3. Press the **MENU** button to enter the Playback Menu and use the **▲** and **▼** buttons to select the Delete setting and press the **REC** button.
4. Use the **▲** and **▼** buttons to select either Delete All, which will delete all unlocked photos and videos, or Delete Current which will delete the selected photo or video.
5. Press the **REC** button to confirm the deletion.

Note: 1. Menu cannot be accessed while the camera is recording. Please stop the recording before attempting to access the menu.
2. You will only be able to delete videos that have not been protected by a **G Sensor**.
3. To unlock protected files please follow the directions given in the section marked in the section marked **Protect Photos and Videos (6.2)**.
4. To easily delete all files on the inserted Micro SD Card, please follow the instructions given in the section marked **Format (2.7.1)**.

6.2 LOCKING AND UNLOCKING PHOTOS AND VIDEOS

To Lock or Unlock photos or videos from being deleted, please follow the instructions below.

1. Navigate to the playback screen using the instructions in the section labelled **Playback Screen**
2. In the Playback Screen use the **▲** and **▼** buttons to select the photo or video that you want to lock or unlock (if you want to lock or unlock all photos and videos select any Photo or Video).
3. Press the **MENU** button to enter the Playback Menu and use the **▲** and **▼** buttons to select the Protect setting and press the **REC** button.
4. Use the **▲** and **▼** buttons to select either **Unlock All**, which will unlock all photos and videos, **Unlock One** to unlock the currently selected photo or video, **Lock All** to lock all videos and photos to protect them from deletion, or **Lock One** to lock the currently selected file to protect the currently selected photo or video from deletion.
5. Select OK and press the **REC** button to confirm your selection.

Note: 1. Menu cannot be accessed while the camera is recording. Please stop the recording before attempting to access the menu.
2. To easily delete all files on the inserted Micro SD Card, please follow the instructions given in the section marked **Format (2.7.1)**.

7. MENU TABLES

Video	Resolution	1080FHD 1920x1080 720P 1280x720 WVGA 848x480 VGA 640x480	
	Loop recording	Off	3 Minutes
		1 Minute	5 Minutes
		2 Minutes	10 Minutes
	WDR	Off	On
	Exposure	+2.0	-1/3
		+5/3	-2/3
		+4/3	-1.0
		+1.0	-4/3
		+2/3	-5/3
		+1/3	-2.0
		+0.0	
	Motion Detection	Off	On
	Microphone	Off	On
	Date Stamp	Off	On
	G Sensor	High	Low
		Medium	Off
Delay Power On	Off	20 Sec	
	10 Sec	30 Sec	
Number Plate	Enter Number Plate		
Park Mode	Low	Medium	
	High		

Still	Capture Mode	Single	5S Timer
		2S Timer	10S Timer
	Resolution	12M 4032x3024	3M 2048x1536
		10M 3648x2736	2MHD 1920x1080
		8M 3264x2448	VGA 640x480
		5M 2592x1944	1.3 1280x960
	Sequence	Off	On
	Quality	Fine	Normal
		Economy	
	Sharpness	Strong	Normal
		Soft	
	White Balance	Auto	Tungsten
		Daylight	Fluorescent
		Cloudy	
	Colour	Color	Sepia
		Black & White	
	ISO	Auto	200
100		400	
Exposure	+2.0	-1/3	
	+5/3	-2/3	
	+4/3	-1.0	
	+1.0	-4/3	
	+2/3	-5/3	
	+1/3	-2.0	
	+0.0		
Anti Shaking	Off	On	

Still	Anti-Shaking	Off	On
	Quick Review	Off	2 Seconds
		5 Seconds	
	Date	Off	Date
		Date/Time	

Setup	Date / Time	Set Time & Date		
	Key Beeps	Off	On	
	Language	English	Chinese S	
		French	Chinese T	
		Spanish	Russian	
		Portuguese	Japanese	
		Dutch	Korean	
		Italian		
	TV Mode	NTSC	PAL	
	Screen Saver	1 Minute	5 Minutes	
		3 Minutes	Off	
	Frequency	50 Hz	60Hz	
	Format	Cancel	OK	
Default Setting	Cancel	OK		
Version	Display Version Number			

WARRANTY TERMS & CONDITIONS

Our goods come with guarantees that cannot be excluded under the Australian & New Zealand Consumer Law. You are entitled to a replacement or refund for a major failure and for compensation for any other reasonably foreseeable loss or damage. You are also entitled to have the goods repaired or replaced if the goods fail to be of acceptable quality and the failure does not amount to a major failure.

This warranty is provided in addition to your rights under the Australian & New Zealand Consumer Law.

Directed warrants that this product is free from defects in material and workmanship for a period of 12 months from the date of purchase or for the period stated on the packaging. This warranty is only valid where you have used the product in accordance with any recommendations or instructions provided by Directed.

This warranty excludes defects resulting from alterations of the product, accident, misuse, abuse or neglect.

In order to claim the warranty, you must return the product to the retailer from which it was purchased or if that retailer is part of a National network, a store within that chain, along with satisfactory proof of purchase. The retailer will then return the goods to Directed. Directed will repair, replace or refurbish the product at its discretion. The retailer will contact you when the product is ready for collection. All costs involved in claiming this warranty, including the cost of the retailer sending the product to Directed, will be borne by you.

Directed Electronics: 44 Translink Drive, Keilor Park Victoria Australia 3042

Ph: +61 03 8331 4800

Email: service@parkmate.com.au

parkmate
YOUR SAFETY COMES FIRST™

www.parkmate.com.au
www.parkmatehd.co.nz



DIRECTED
AUSTRALIA & NZ

© Parkmate 2016