

parkmate HD

WIDE ANGLE REARVIEW CAMERA *with* **DUAL MOUNT OPTIONS**



INSTALLATION / USER MANUAL

MODEL: CMD-12N

www.parkmate.com.au

Thank you for purchasing Parkmate's CMD-12N camera. We are certain that our product will give you trouble-free operation while providing you with a safety feature that enhances your driving experience.

Our products, like most after-market safety enhanced devices, are to assist and aid the driver, not to replace the manual function of the person operating the vehicle.

Although this is a visual aid and will allow you to view what is behind the vehicle, it does not remove the responsibility of driving the vehicle from the driver. The legal responsibility and safe driving practise remains with the driver at all times. You have purchased this product with the understanding that its use is as an aid only. We highly recommend that you have this product professionally installed to ensure that it will provide the functions it is set out to perform.

CMD-12N Component List:



Notes:

- Please read this manual carefully before using the product.
- This system is intended as an aid to safe reverse operation. Drivers must always use extreme caution when operating a vehicle.
- Specifications subject to change without prior notice.

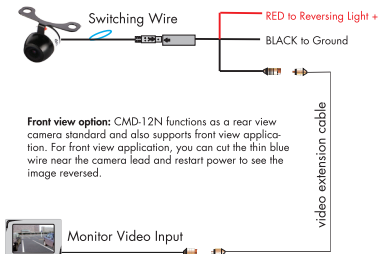
Warning:

- Do not disassemble the camera or cut the camera cable as this voids the warranty. Disassembling the camera will compromise the waterproof seal.
- Do not remove the Directed warranty sticker as this voids warranty.

Technical Specifications:

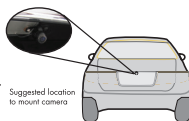
Signal System:	NTSC
Horizontal Resolution:	420TVL
Minimum Illumination:	0.2Lux
Diagonal Angle:	170°
Waterproof Grade:	IP67
Nominal Voltage:	DC12V
Working Temp.:	-20°C to 85°C

Wiring Diagram:

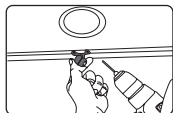


Installation - Butterfly Mount

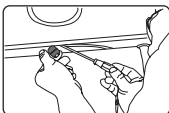
1. Select a flat and centred location near the number plate lamp at the rear of the vehicle to mount camera.



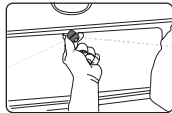
IMPORTANT: When selecting this location it is highly recommended that the image transmitted by the camera show the rear bumper and area behind the vehicle.



2. Attach the 3M tape to the bracket of the camera, and drill a small hole for the first screw.



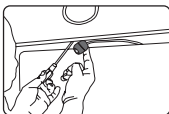
3. Use a screw driver to fix the first screw, but don't tighten it yet.



4. Insert camera wire through newly drilled hole and mount securely in place.



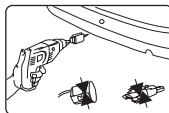
5. Mark the position suitable for the second screw and drill a small hole for it.



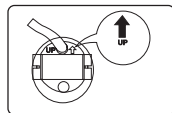
6. Fix the second screw and tighten both screws.

Installation - Flush Mount

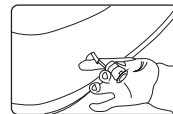
1. Unscrew the upper part of the camera anticlockwise, detach the upper part and bracket, and place the bumper adaptor instead.



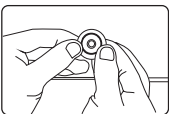
2. Mark the middle position of rear bumper, and drill a hole with the provided 16.5mm hole saw.



3. Adjust the camera to turn the UP arrow straight up-wards.



4. Pull the camera lead through the bumper hole before fixing the camera.



5. Put the camera into the hole and use both your thumbs to press it evenly to ensure tight and flat mounting.

Testing

How to test:

1. Apply the parking brakes.
2. Turn Ignition on. (DO NOT TURN ON VEHICLE)
3. Shift into reverse gear.
4. Image should appear on the monitor.

Trouble Shooting:

Problem	Solution
"No Signal" appears while reversing	1. Check video input connections 2. Check camera power connections
Video image is not sharp	Check camera lens for debris

Maintenance:

Always keep camera clear from dirt and mud. Clean camera with a soft moist cloth.

To view the complete Parkmate range or for details on how to contact us, please visit our website at www.parkmate.com.au